

S COOLERS

S100



Cool Breeze S100

Airflow = 2.15 m³/s (free air)

Airflow = 7 740 cm/h (free air)

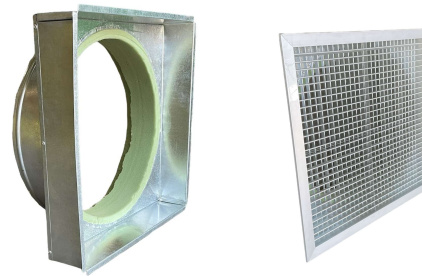
Motor = 600w

Power Consumption = 0.8 Kw

Pad Size = 2 x 930h x 275w x 75mm

1 x 930h x 840w x 75mm

Cooler is low-profile designed to mount up against a wall and use S100 Duct Adaptor and Supply Air Grille (optional extra items)



S240



Cool Breeze S240

Airflow = 4.20 m³/s (free air)

Airflow = 15 120 cm/h (free air)

Motor = 1000w

Power Consumption = 1.32 Kw

Pad Size = 3 x 950h x 830w x 100mm

- Cooler can be mounted on the floor or on wall brackets (extra item – 2 required)
- Advisable to use Flexible connector to 690x690 flange to facilitate easy servicing of cooler when ducting is in place



Full Specs – S Side Discharge Coolers

MODELS		S100	S240
Airflow	cm/s	2.15	4.20
	cm/h	7 740	15 120
Motor	Voltage (50 Hz)	220 – 240 (50 Hz)	
	CSR Single phase	600	1000
	Capacitor	30 uF	
	Thermal overload prot.	Yes	
	Power – Amps	3.6	6.0
	Power – Kw	0.8	1.32
	RPM – low / high	750/1200	850/1370
Fan	Auswing II 35° Pitch	X	
	Auswing II 40° Pitch		
	PowerFlow Fixed Pitch		X
	Diameter (mm)	524	
Pump	Voltage (50 Hz)	220 – 240	
	Thermal overload UL cert.	Yes	
	Insulation	"F" Class	
	Performance (litres/minute)	29.5	
	Power	0.44 Amps	
	RPM	2550	
Water	Inlet connection	½ Inch BSP	
	Drain	40mm	40mm
	Sump capacity	5 – 8 litres	10 – 12 litres
	Water level	Hall Effect Sensor	
Filter Media	Size (mm)	930h x 840w x 1 930h x 270w x 2	950h x 830w x 3
	Thickness (mm)	75	100
Size	Length x Width (mm)	1070 x 525	1130 x 1130
	Height (mm)	1120	1150
	Outlet diameter (mm)	528	528
	Duct useable size (mm)	587x587	690x690
Shipping weight (kg)		40	65
Operating weight (kg)		53	75
Colours	Beige	Available ex-stock in South Africa	
	Red, Green, Grey	Available as special order from Australia	